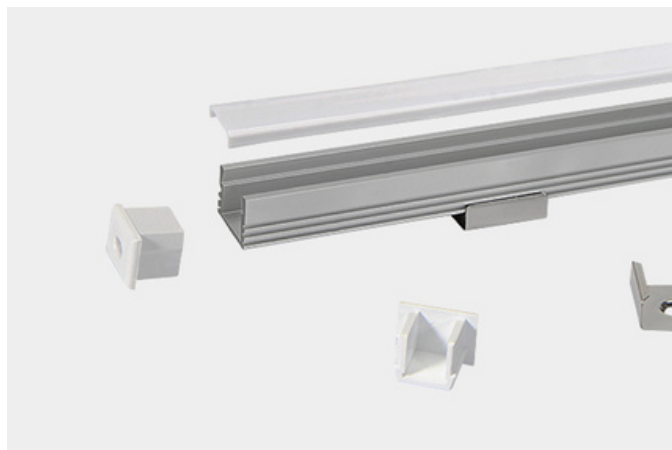


XT1612



The XT1612 extrusion has been designed for wall mounted installation.



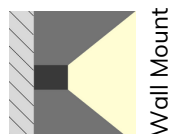
All X-Trusion Profiles can be used as independent lighting sources for practical projects, or to complement lighting designs.

We offer any length of Extrusion between 0.5M and 3M meaning that custom lengths between these sizes are fully achievable.

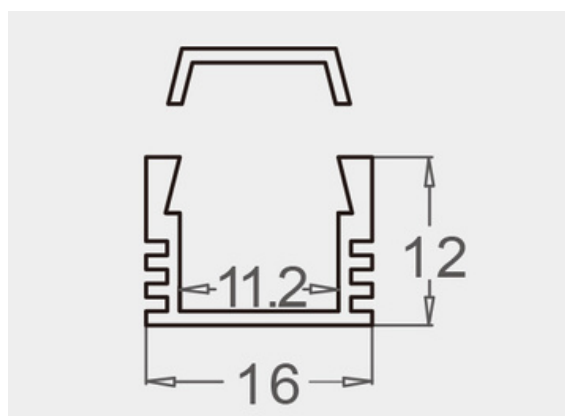
Extrusion Colour Options:



Installation Options:



| LED Extrusion Specifications | |
|------------------------------|------------------|
| Dimensions | 16 x 12mm |
| Material | Aluminium |
| Lighting Source Width | 11mm |
| Surface | Anodised/Painted |
| IP Rating | IP20 |
| Warranty | 3 years |
| Certification | CE |



| Accessories | Material | Size (mm) | Colour |
|---------------|-----------------|-----------------|---|
| Cover | Polycarbonate | 12.9 x 4 | Diffused/Transparent/Opal |
| End Cap | Polycarbonate | 16 x 12 x 12 | Grey/White/Silver, With hole/Without hole |
| Mounting Clip | Stainless Steel | 20 x 8.6 x 16.5 | Stainless Steel |

If you need any more information send us an email or to place an order head to our website.

Email: info@ledlimited.co.uk Web: www.llguk.com/x-trusion