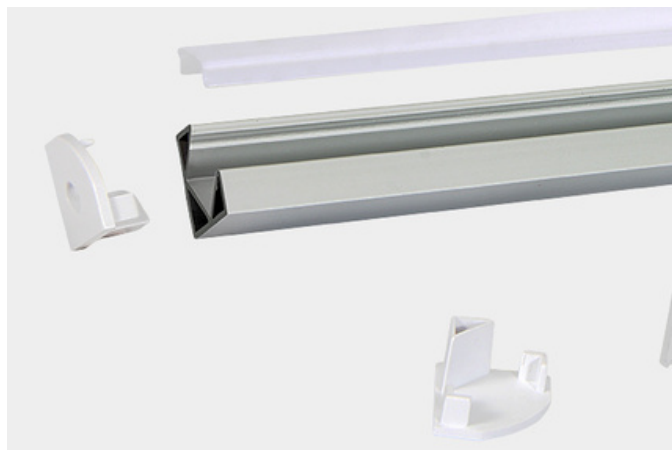


XT1919F



The XT1919F extrusion has been designed for wall mounted installation.



All X-Trusion Profiles can be used as independent lighting sources for practical projects, or to complement lighting designs.

We offer any length of Extrusion between 0.5M and 3M meaning that custom lengths between these sizes are fully achievable.

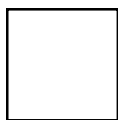
Extrusion Colour Options:



Black

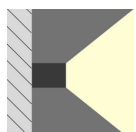


Silver



White

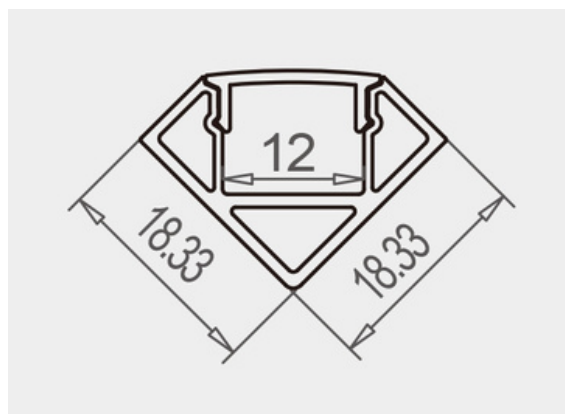
Installation Options:



Wall Mount



LED Extrusion Specifications	
Dimensions	18.3 x 18.3mm
Material	Aluminium
Lighting Source Width	12mm
Surface	Anodised/Painted
IP Rating	IP20
Warranty	3 years
Certification	CE



Accessories	Material	Size (mm)	Colour
Cover	Polycarbonate	14.8 x 5.2	Diffused/Transparent/Opal
End Cap	Polycarbonate	18.3 x 18.3	Grey/Silver/White, With hole/Without hole
Mounting Clip	Stainless Steel	22.5 x 22.5 x 20	Opal

If you need any more information send us an email or to place an order head to our website.

Email: info@ledlimited.co.uk Web: www.llguk.com/x-trusion