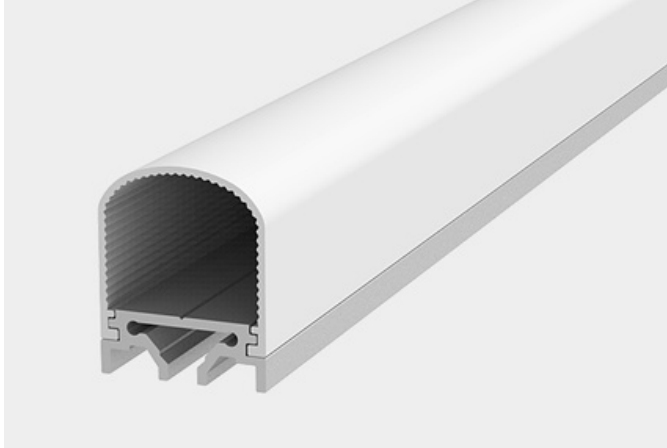


XT2025



The XT2025 extrusion has been designed for hanging installation.



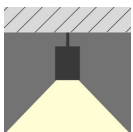
All X-Trusion Profiles can be used as independent lighting sources for practical projects, or to complement lighting designs.

We offer any length of Extrusion between 0.5M and 3M meaning that custom lengths between these sizes are fully achievable.

Extrusion Colour Options:



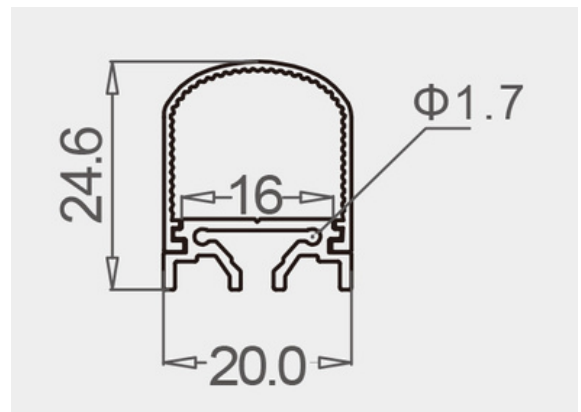
Installation Options:



Pendant



LED Extrusion Specifications	
Dimensions	20 x 24.6mm
Material	Aluminium
Lighting Source Width	16mm
Surface	Anodised/Painted
IP Rating	IP20
Warranty	3 years
Certification	CE



Accessories	Material	Size (mm)	Colour
Cover	Polycarbonate	20 x 24.6 x 2	Diffused/Transparent/Opal
End Cap	Polycarbonate	20 x 24.6	Grey/Silver/White, With hole/Without hole
Suspension Wire	Stainless Steel	-	Stainless Steel

If you need any more information send us an email or to place an order head to our website.

Email: info@ledlimited.co.uk Web: www.llguk.com/x-trusion