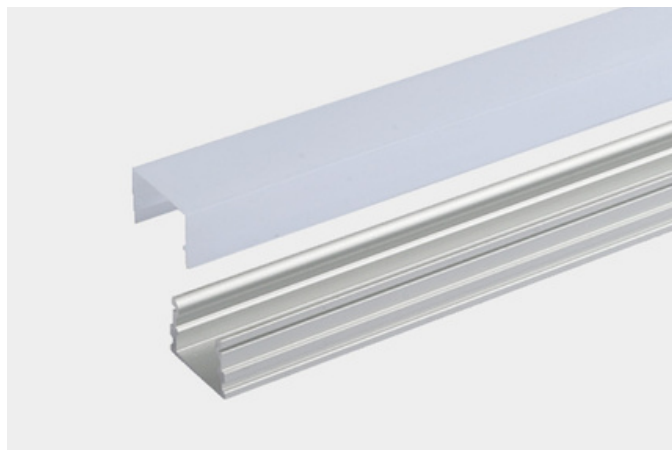


XT2114



The XT2114 extrusion has been designed for wall mounted installation.



All X-Trusion Profiles can be used as independent lighting sources for practical projects, or to complement lighting designs.

We offer any length of Extrusion between 0.5M and 3M meaning that custom lengths between these sizes are fully achievable.

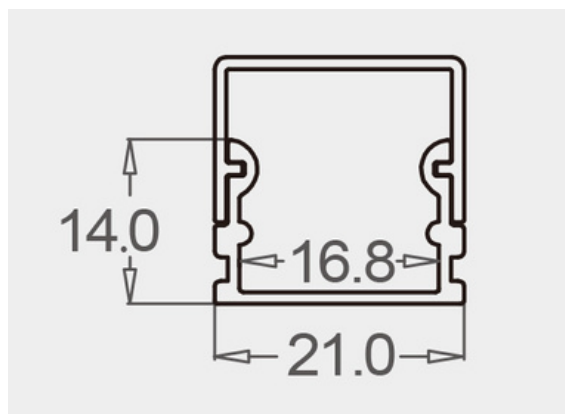
Extrusion Colour Options:



Installation Options:



LED Extrusion Specifications	
Dimensions	21 x 14mm
Material	Aluminium
Lighting Source Width	16.8mm
Surface	Anodised/Painted
IP Rating	IP20
Warranty	3 years
Certification	CE



Accessories	Material	Size (mm)	Colour
Cover	Polycarbonate	21 x 14.1	Diffused/Transparent/Opal
End Cap	Polycarbonate	21 x 21 x 6.0	Grey/Silver/White, With hole/Without hole
Mounting Clip	Stainless Steel	24 x 9.3 x 14	Stainless Steel