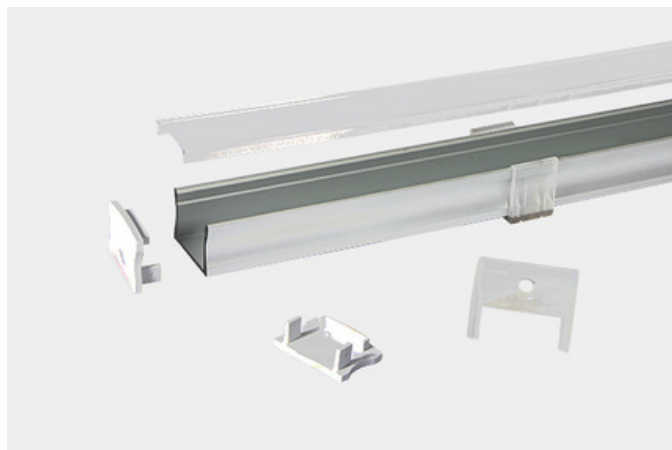


# XT2216



The XT2216 extrusion has been designed to for wall mounted installation.



All X-Trusion Profiles can be used as independent lighting sources for practical projects, or to complement lighting designs.

We offer any length of Extrusion between 0.5M and 3M meaning that custom lengths between these sizes are fully achievable.

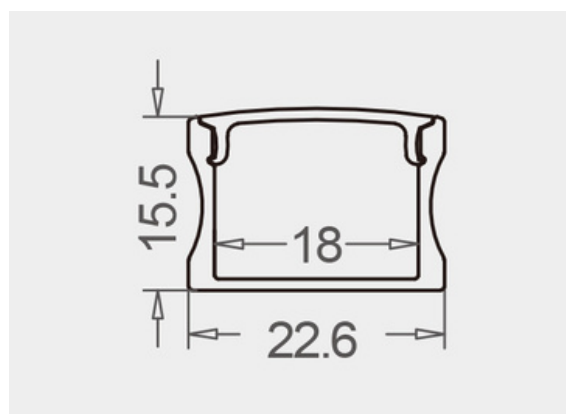
Extrusion Colour Options:



Installation Options:



| LED Extrusion Specifications |                  |
|------------------------------|------------------|
| Dimensions                   | 22.6 x 15.5mm    |
| Material                     | Aluminium        |
| Lighting Source Width        | 18mm             |
| Surface                      | Anodised/Painted |
| IP Rating                    | IP20             |
| Warranty                     | 3 years          |
| Certification                | CE               |



| Accessories   | Material        | Size (mm)         | Colour                                    |
|---------------|-----------------|-------------------|---|
| Cover         | Polycarbonate   | 20.6 x 5          | Diffused/Transparent/Opal                 |
| End Cap       | Polycarbonate   | 22.6 x 15.5 x 2   | Grey/Silver/White, With hole/Without hole |
| Mounting Clip | Stainless Steel | 25.3 x 1.2 x 18.9 | Transparent                               |