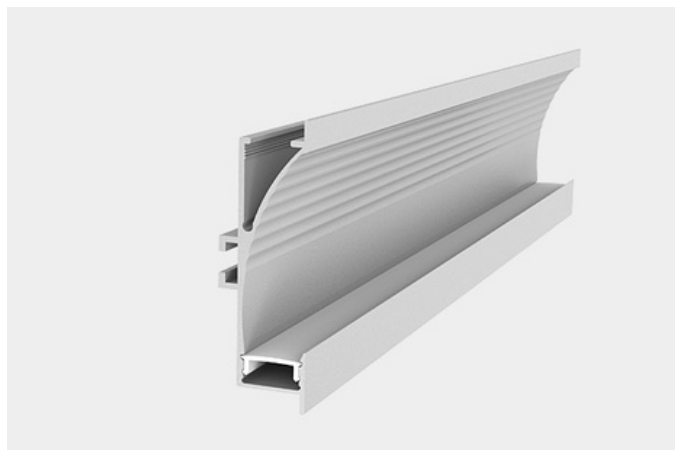


# XT7060



The XT7060 extrusion has been designed to be recessed into surfaces.



All X-Trusion Profiles can be used as independent lighting sources for practical projects, or to complement lighting designs.

We offer any length of Extrusion between 0.5M and 3M meaning that custom lengths between these sizes are fully achievable.

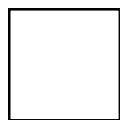
Extrusion Colour Options:



Black

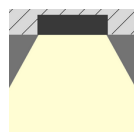


Silver



White

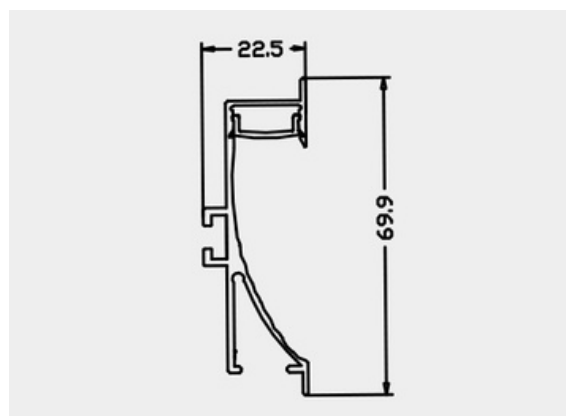
Installation Options:



Recessed



LED Extrusion Specifications	
Dimensions	69.97 x 25.36mm
Material	Aluminium
Lighting Source Width	14mm
Surface	Anodised/Painted
IP Rating	IP20
Warranty	3 years
Certification	CE



Accessories	Material	Size (mm)	Colour
Cover	Polycarbonate	17.5 x 7	Diffused/Transparent/Opal
End Cap	Polycarbonate	69.9 x 22.5	Grey/White/Silver, With hole/Without hole
Mounting Clip	Stainless Steel	-	Stainless Steel

If you need any more information send us an email or to place an order head to our website.

Email: [info@ledlimited.co.uk](mailto:info@ledlimited.co.uk) Web: [www.llguk.com/x-trusion](http://www.llguk.com/x-trusion)